

OBTURATION
INNOVATION



BioRoot™ RCS

High seal, and much more

bigman
dental

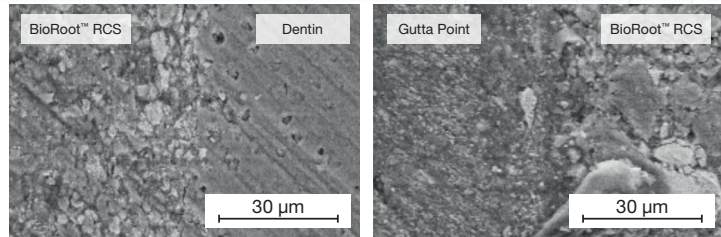


4 innovative features for

① High seal

Tight interface

- Outstanding adhesion to dentin and gutta-percha points
- Less risks of voids

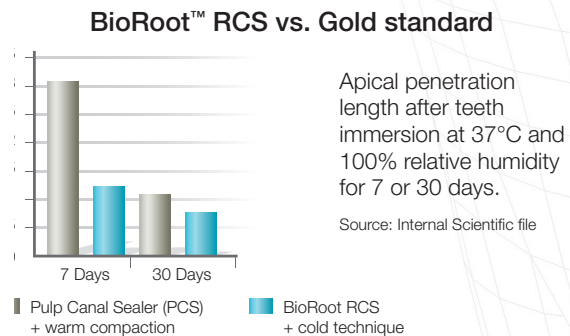


Tight dentin/BioRoot™ RCS/Gutta-Percha interface

Source: Internal Scientific file

High microleakage resistance

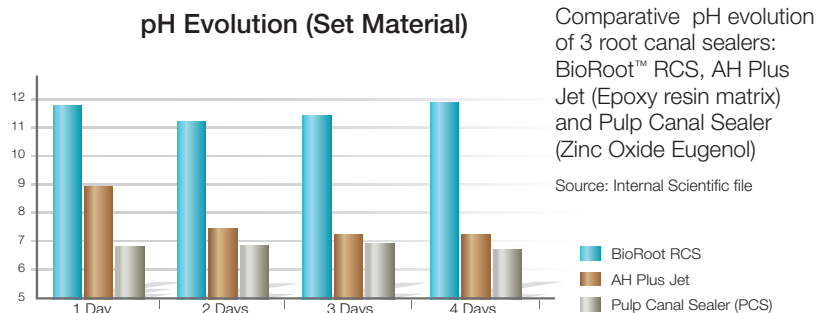
- BioRoot™ RCS crystallization for a 3 dimensional seal
- Dentin structure mineralization through hydroxy-apatite formation
- Better microleakage resistance than warm technique at short times



② Antimicrobial properties

Creates a favorable alkaline environment

- Calcium hydroxide release
- Allows increase of pH value >11
- Prevents bacterial growth leading to clinical failures



successful obturations

③ Peri-apical healing

Maximizes chances of success

- High purity mineral formulation
- Bioactive obturation:
 - stimulates bone regeneration
 - promotes periodontal healing

④ Easy obturations & follow-up

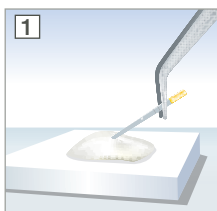
Fast placement

- Easy coating of root canal walls
- Rapid insertion of the Gutta-Percha point
- Optimized working and setting times:
 - Working time: > 10 minutes
 - Setting time: < 4 hours

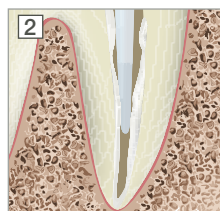
Easy follow-up

- 5 mm Al radiopacity for easy follow-up on the radiograph
- Simple retreatment: use in combination with Gutta-Percha points

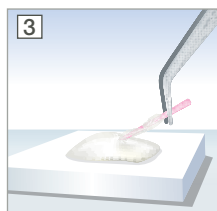
Clinical implementation



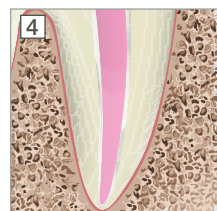
Take mixed BioRoot™ RCS with a paper point



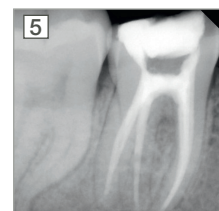
Coat the root canal walls with BioRoot™ RCS



Coat the apically adjusted cone with BioRoot™ RCS



Insert the cone gently into the root canal



Immediate post-operative radiograph

BioRoot™ RCS: high seal and much more

	Bioroot™ RCS	Epoxy-Based Sealers	Zinc Oxide Eugenol Pastes
OUTSTANDING SEAL	✓	✓	✓
EASY TO USE	✓	✓	✓
BIOACTIVE	✓	✗	✗
HIGH pH (>11)	✓	✗	✗
RESIN-FREE FORMULATION	✓	✗	✓
HYDROXY-APATITE FORMATION	✓	✗	✗
DENTIN MINERALIZATION	✓	✗	✗
RADIOPAQUE	✓	✓	✓

BioRoot™ RCS comes in a convenient hand-mix presentation

- Full control of the final viscosity
- Reduced risk of cross contamination compared to in-mouth inserted syringes
- Less material waste through hand dosage of powder



ACTIVE
BIOSILICATE
TECHNOLOGY

35-application pack

- 15 g powder bottle
- 35 single dose containers



08-564 373 70 | www.bigmandental.se | mail@bigman.se

bigman
dental

Septodont - 58 Rue du Pont de Créteil - 94100 Saint-Maur-des-Fossés - France

Tél. : +33 (0)1 49 76 70 00 - Fax : +33 (0)1 48 85 54 01

Please visit our website for more information:

www.septodont.com

